

Surface and groundwater

Current research projects are looking at maximising the amount of treated coal seam gas water that can be re injected into aquifers.



Overall progress **74%**

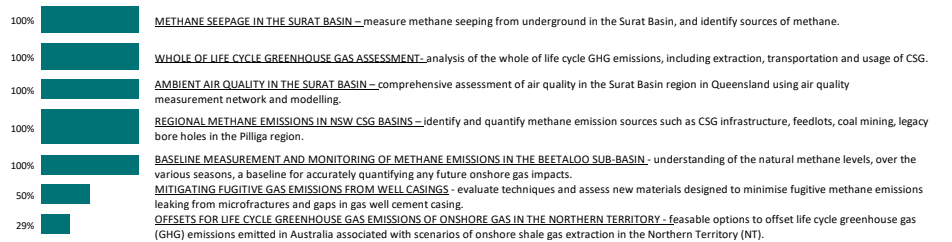


Greenhouse gas footprint

Current research project is looking at characterising methane emissions from the Surat Basin.



Overall progress **83%**

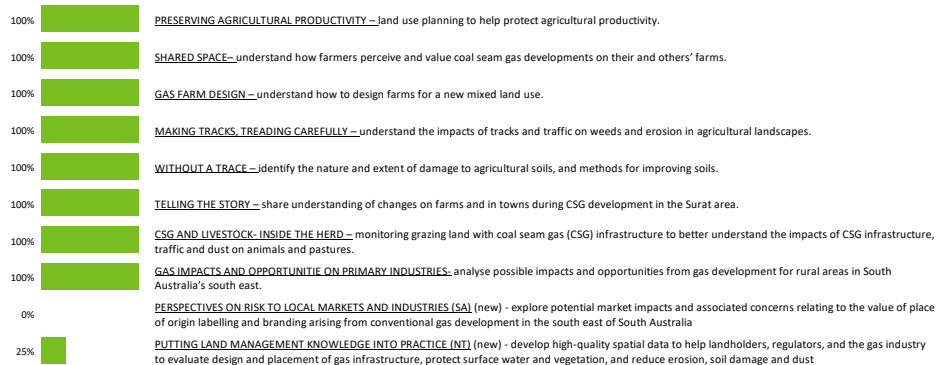


Agricultural land management

Current research projects are designed to maximise agricultural productivity during and beyond the life of gas extraction on farms.



Overall progress **89%**

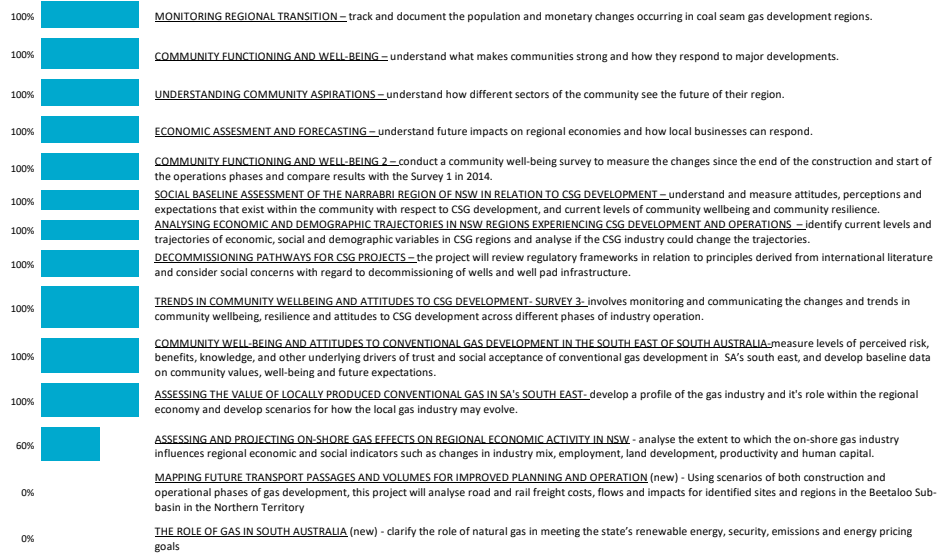


Socio-economic

Current research projects are identifying what communities want and need to help inform and support changes occurring in coal seam gas development regions.



Overall progress **89%**

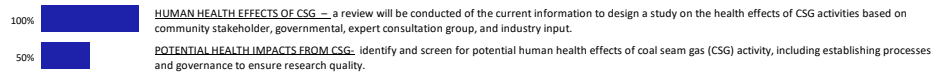


Health impact

Current research projects are focusing on reviewing current information to look for potential health impacts of coal seam gas.



Overall progress **70%**

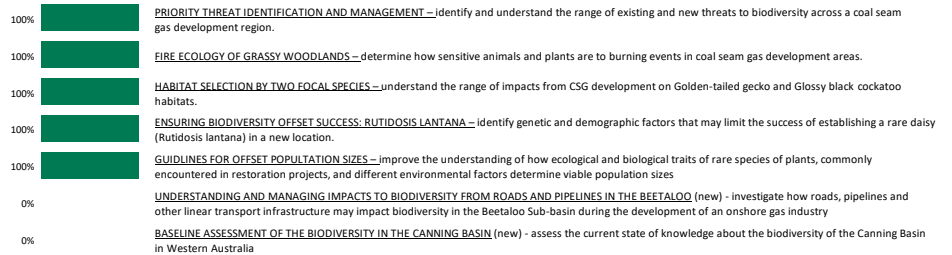


Terrestrial biodiversity

Current research projects are identifying cost effective actions that can be taken to reduce threats to plants and animals.



Overall progress **70%**



Marine environment

Current research projects are examining how sediments from dredging and discharge affect seagrass and turtle feeding grounds.



Overall progress **100%**

