



Attitudes to Coal Seam Gas development in the Narrabri Shire of New South Wales

APRIL 2018

A survey of community wellbeing and attitudes to coal seam gas (CSG) was conducted in the Narrabri Shire, NSW, in March - April 2017. This factsheet presents some of the findings on attitudes to a potential CSG development.

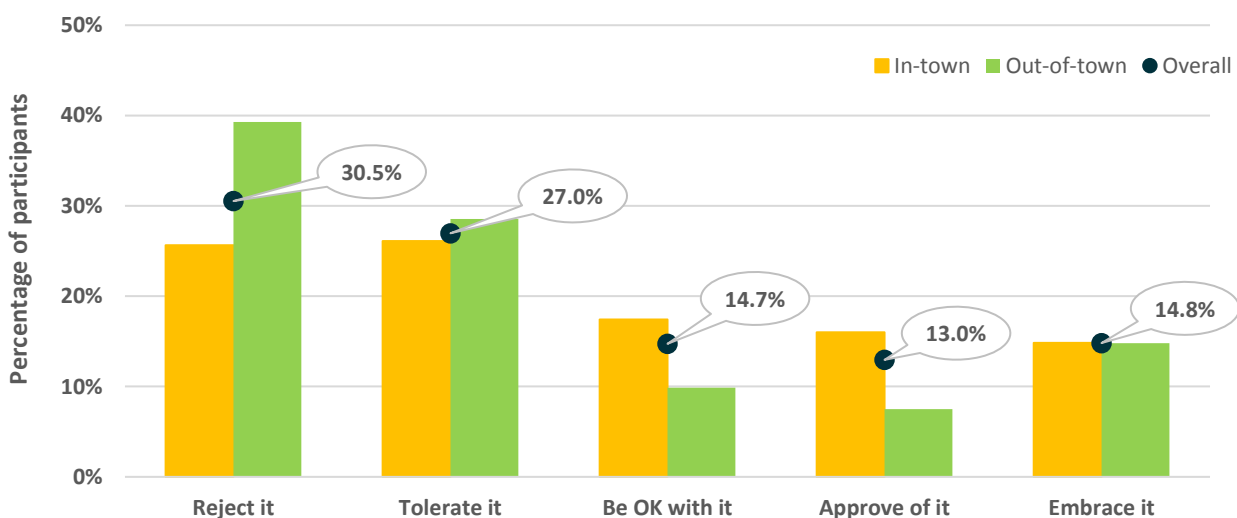
Overall attitudes to a CSG development

KEY POINTS

Attitudes toward a potential CSG development varied widely in the Narrabri Shire

- 30% of residents indicated they would 'reject' the CSG development; 27% would 'tolerate it', 15% would be 'ok with it', 13% would 'approve of it', and 15% would 'embrace it'.
- Attitudes to proposed CSG development were more favourable in-town than out-of-town
- People who lived in Narrabri and surrounds held more favourable views than those who lived in other subregions of the shire

Attitudes towards CSG development

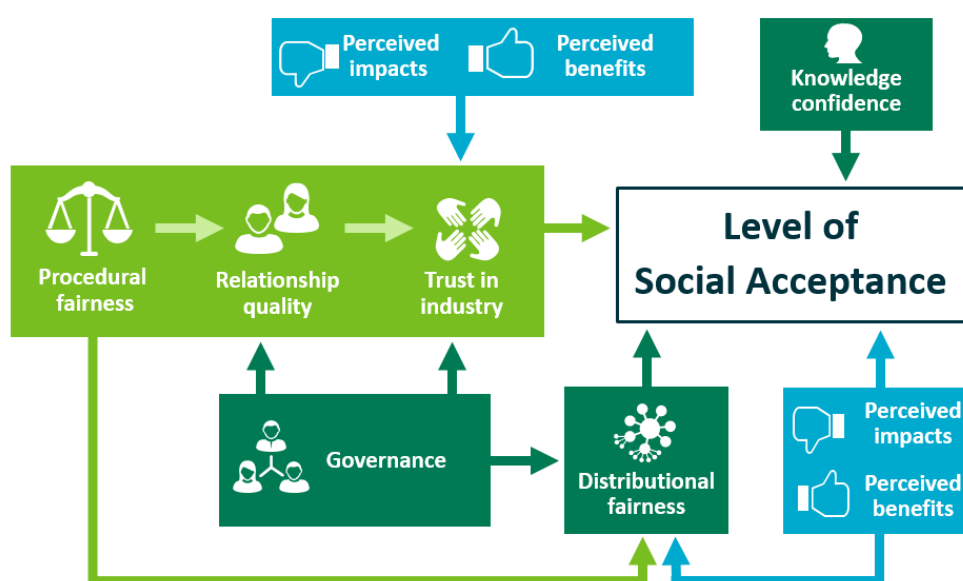


Underlying drivers of social acceptance

KEY POINTS

Levels of social acceptance in local communities depend on people's perceptions about:

- Industry effects: **perceived impacts** and **benefits**
- Relations between community and CSG operator: **procedural fairness**; **relationship quality**; and **trust in industry**
- **Distributional fairness** in terms of how benefits and costs will be shared
- **Governance** of the industry: compliance, regulations, planning and trust in governing bodies
- Resident confidence in their **knowledge** about the local CSG industry



How this model works:

- Perceived impacts is the main driver of acceptance or lack thereof
- Perceived impacts and benefits both directly influence acceptance
- They also indirectly influence acceptance via distributional fairness and trust in industry
- Good governance supports relational aspects and distributional fairness
- Confidence in knowledge has a small influence on acceptance

A statistical model explaining social acceptance, or lack thereof, of CSG development



FREQUENTLY ASKED QUESTIONS

How was the survey done?

The survey data was collected in March – April 2017 using a 30-minute telephone interview from a randomly selected representative sample of 400 residents from the Narrabri Shire of NSW

Information sources?

Walton, A., and McCrea, R. (2017). *Community wellbeing and local attitudes to coal seam gas development. Social baseline assessment: Narrabri project*. CSIRO report. CSIRO Australia

Walton, A. McCrea, R. and Jeanneret, T. (2018) *Social Baseline Assessment: Narrabri project- Final Report*. A final report to the Gas Industry Social and Environmental Research Alliance (GISERA). February 2018. CSIRO, Canberra

Available at: <https://gisera.csiro.au>

ABOUT GISERA

The Gas Industry Social and Environmental Research Alliance (GISERA) is a collaboration between CSIRO, Commonwealth and state governments and industry established to undertake publicly-reported independent research. The purpose of GISERA is to provide quality assured scientific research and information to communities living in gas development regions focusing on social and environmental topics including: groundwater and surface water, biodiversity, land management, the marine environment, and socio-economic impacts. The governance structure for GISERA is designed to provide for and protect research independence and transparency of research. Visit gisera.csiro.au for more information on GISERA's governance structure, projects and research findings.

FURTHER INFORMATION: 1300 363 400 | gisera@gisera.csiro.au